

FOR MORE INFORMATION:

For ages 2 1/2-5 (not enrolled in a public school program), please call 436-7120 to make an appointment.

For ages 2 1/2 and below, please contact the local Babynet office at 915-8805.



CHILD FIND CLINIC DATES

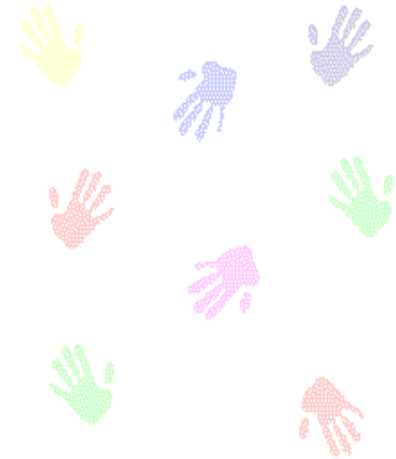
- September 14, 2011-Andrews Elementary School
- September 21, 2011-Kensington Elementary School
- October 26, 2011-Pleasant Hill Elementary School
- November 9, 2011-Brown's Ferry Elementary School
- November 16, 2011-Waccamaw Elementary School
- January 11, 2012-Andrews Elementary School
- January 25, 2012-McDonald Elementary School
- February 15, 2012-Pleasant Hill Elementary School
- March 7, 2012-Sampit Elementary School
- March 28, 2012-Waccamaw Elementary School
- July 26, 2012-Plantersville Elementary School
- July 27, 2012-Maryville Elementary School

PLEASE CALL 436-7120 FOR MORE INFORMATION.



**Georgetown County School District
Special Services Department**
Dr. Carole Sorenti
Executive Director for Special Services
J.B. Beck Administration and Education Center
2018 Church Street
Georgetown, SC 29440
843-436-7120
Fax: 843-436-7112

CHILD FIND CLINICS



**Sponsored by the Georgetown County School District
Special Services Department**
Dr. Carole Sorenti
Executive Director for Special Services
J.B. Beck Administration and Education Center
2018 Church Street
Georgetown, SC 29440
843-436-7120
Fax: 843-436-7112

WHAT IS CHILD FIND?

Child Find is part of the Individuals with Disabilities Education Act (IDEA) that requires individuals (ages birth-21) who may have a disability to be located, identified and evaluated. **The purpose of this clinic is to identify developmental delays and disabilities (for children ages 2 1/2-5**

who are not enrolled in a public school program)

that may impose learning difficulties and provide early intervention.



What to look for:

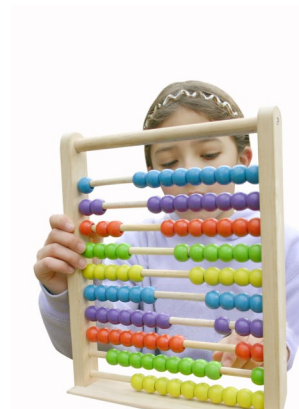
- ◇ Does not follow simple commands
- ◇ Does not respond to affection
- ◇ Does not talk and/or has limited vocabulary
- ◇ Has poor balance or coordination
- ◇ Persistent drooling or very unclear speech
- ◇ Little interest in other children

HOW ARE CHILDREN SCREENED?

Screenings for individuals not enrolled in school are on an appointment basis. The following areas are assessed:

- Developmental
- Hearing
- Vision
- Speech / Language

The child has to be accompanied by an adult. A parent/guardian consent is required at the time of screening .



The screenings are free of charge.

WHO DO I CONTACT?

For individuals ages 2 1/2-5 (not enrolled in a public school program), please call 436-7120 to make an appointment.

For ages 2 1/2 and below, please contact the local Babynet office at 915-8805.

DID YOU KNOW?

- ⇒ In South Carolina, there are 10, 472 preschool children (ages 3-5) with disabilities.*
- ⇒ Studies have shown that children who have hearing loss can have delays in speech, language, social skills, and academic achievement. **
- ⇒ In the United States, 17% of children have a developmental or a behavioral disability however less than 50% are identified before starting school. **



Source: *South Carolina 2007-2008
Special Education District Public Report
(Georgetown)
**National Center on Birth Defects
and Developmental Disabilities